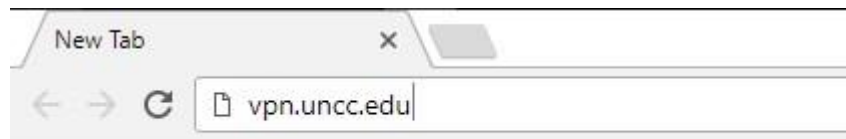


Mosaic Anywhere on Windows

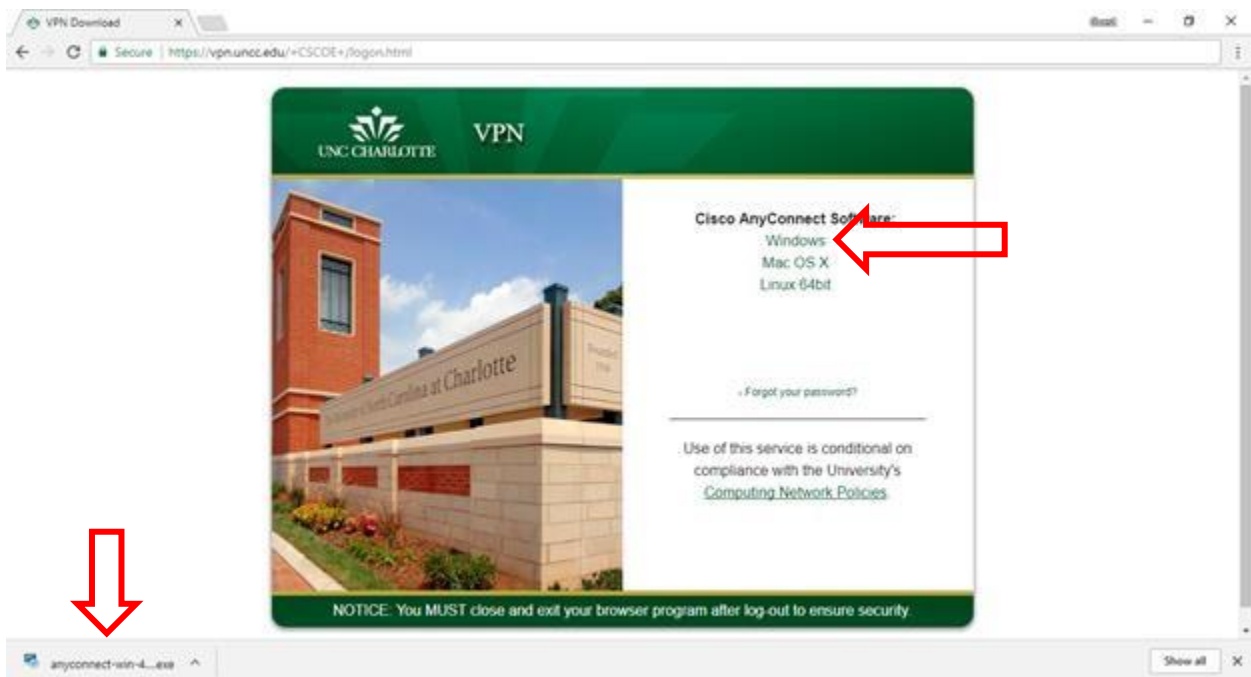
In order for a person off-campus to access Mosaic Anywhere they must download and install the VPN client then connect to the correct profile. This documentation serves the purpose of outlining how to install and connect to the VPN and how to connect to Mosaic Anywhere. Please note that if you are on campus, you do not need the VPN but you do need to be connected to the eduroam network.

Installing the VPN

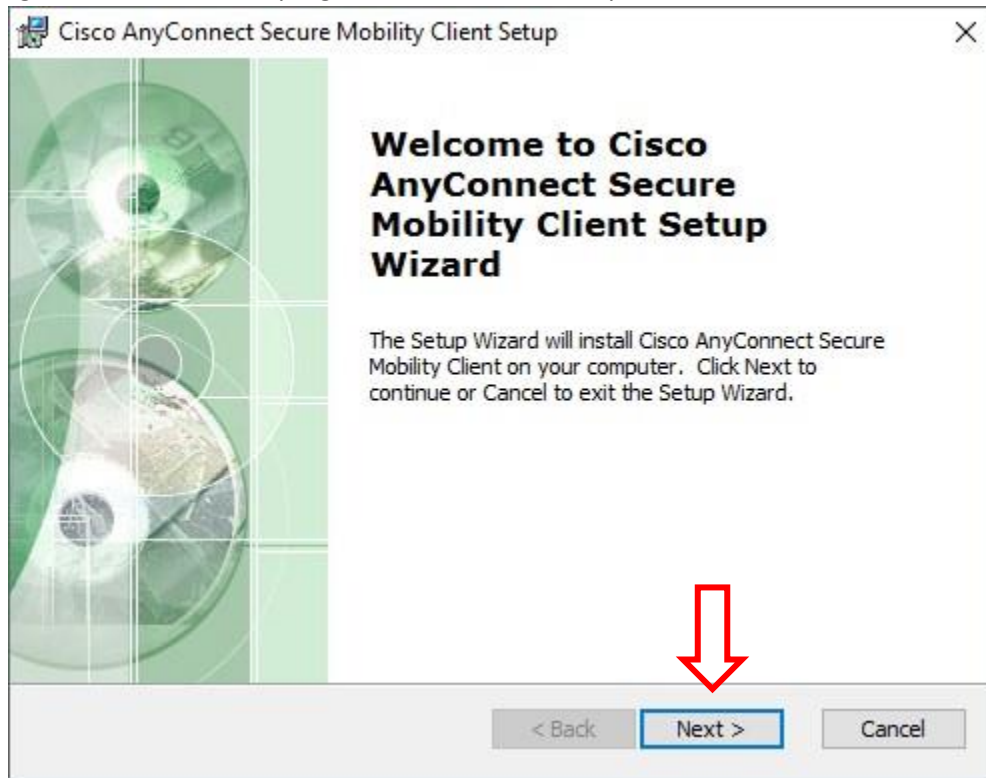
To download the VPN, go to <https://vpn.uncc.edu> in your web browser



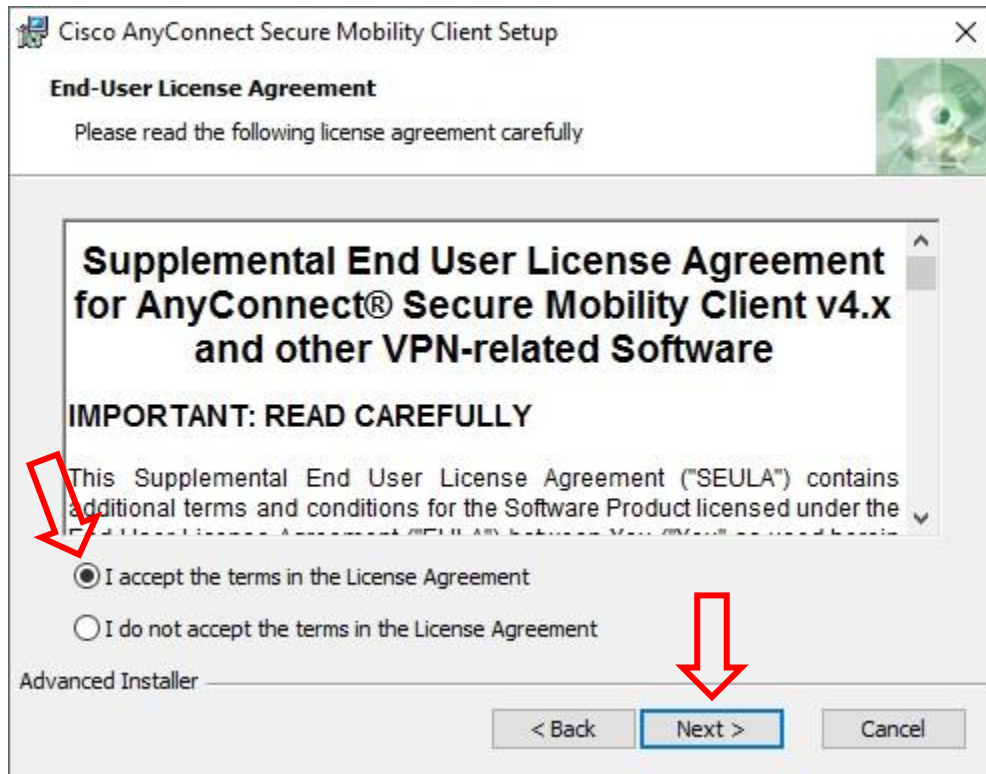
You will be taken to a page that look like this, click on **Windows** to download the VPN client for Windows, then click on the downloaded program to install it:



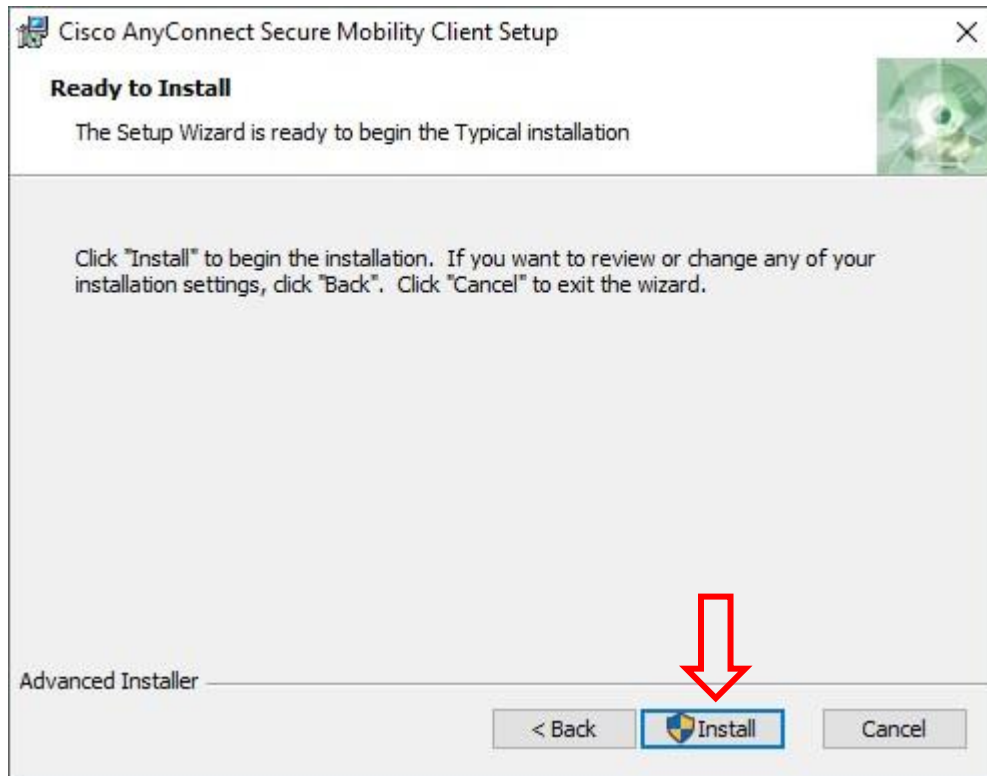
After clicking on the downloaded program, this window will open. Click **Next**:



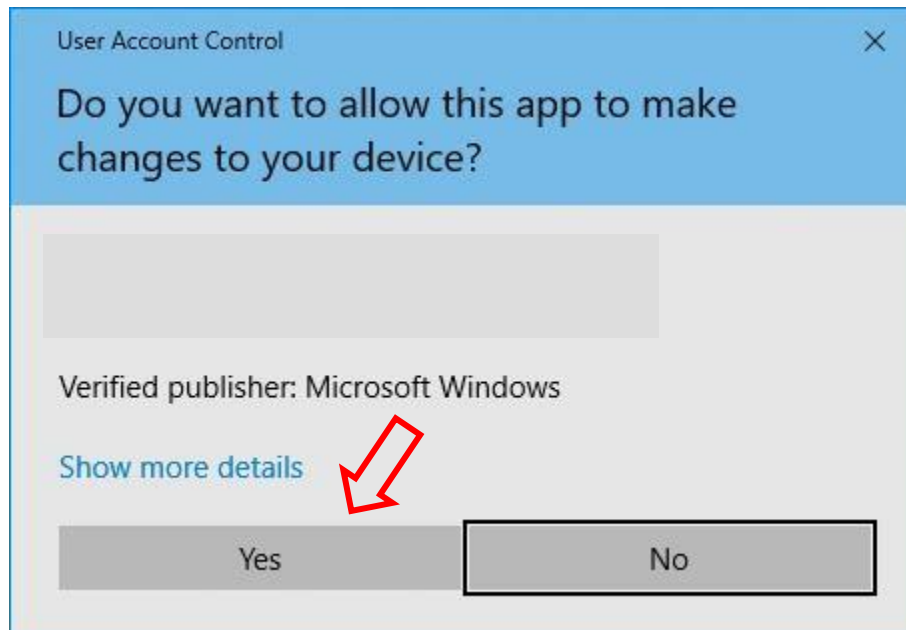
Accept the EULA and click **Next**:



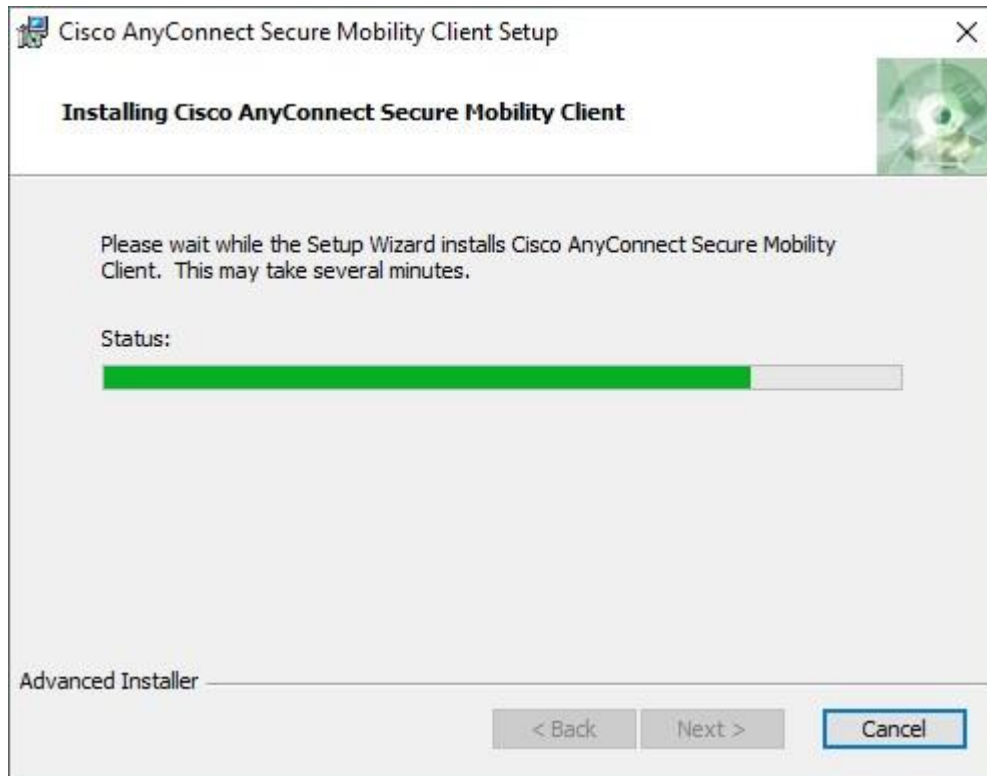
Click **Install** to start the installation:



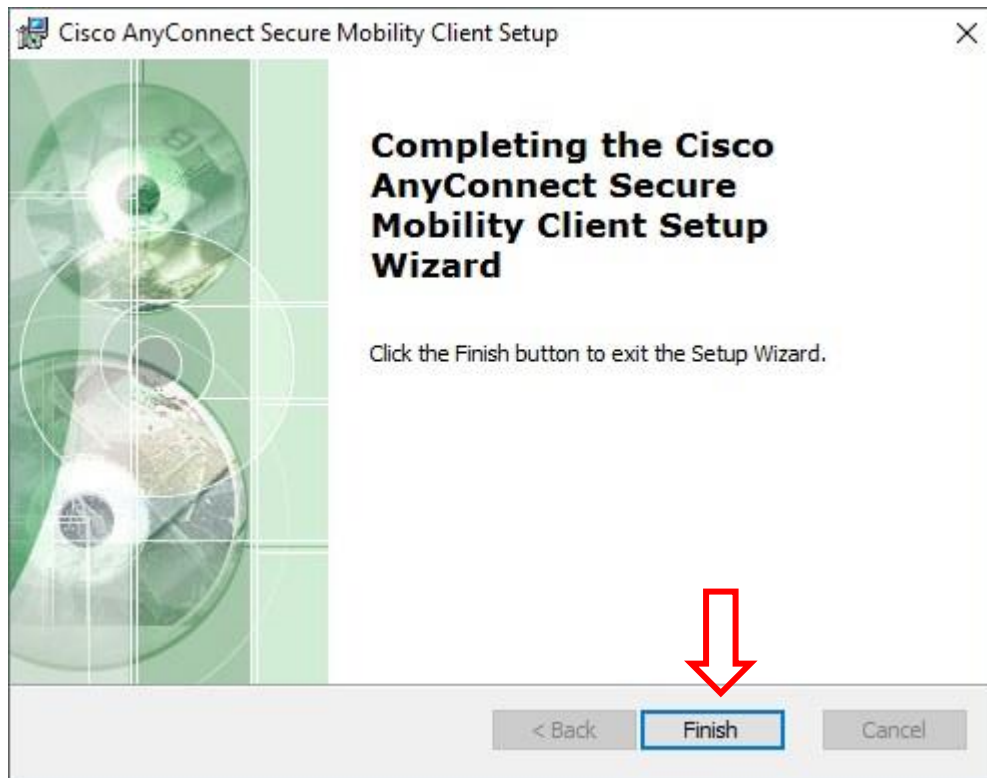
You will be asked for Admin Credentials. Click **Yes**:



Wait for the installer to finish installing:



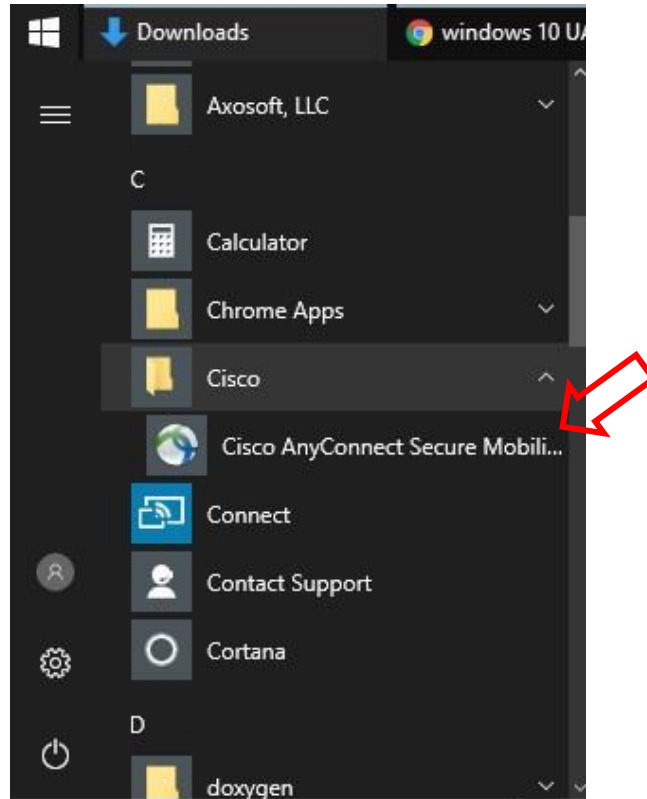
Then click **Finish**:



Connecting to the VPN

After you have installed the VPN client, you will need to connect to the VPN:

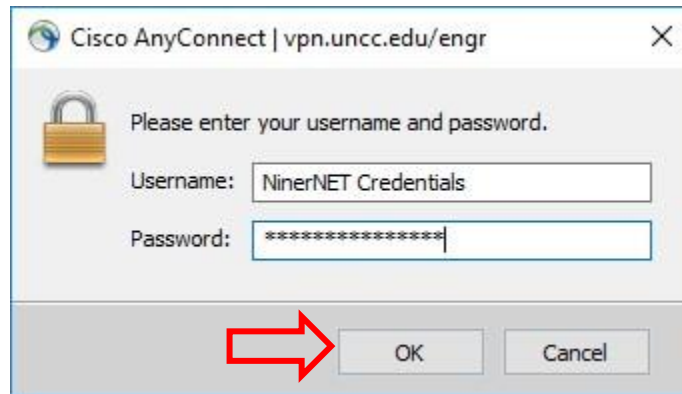
Click **Start Button** and in the Programs Menu find **Cisco AnyConnect** and click to open the program:



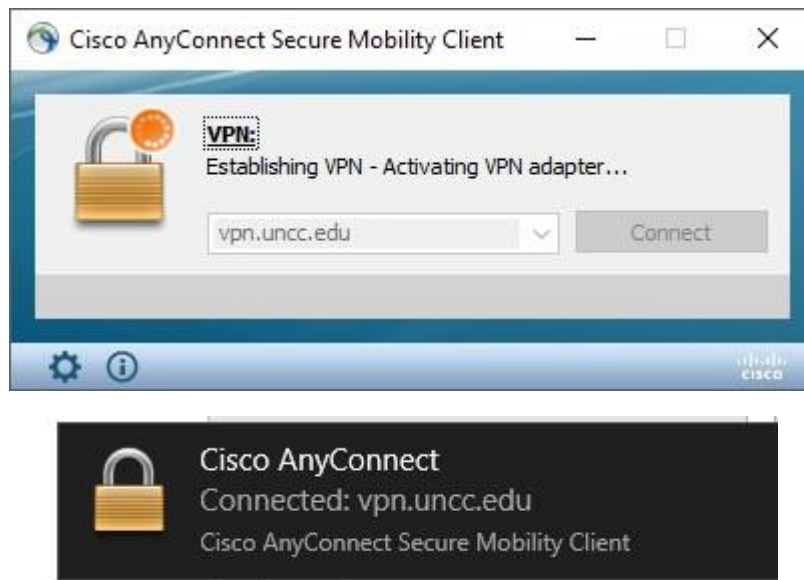
A window like this will open, type in **vpn.uncc.edu**. Then click **Connect**:



Type in your NinerNET Credentials in the boxes, then click **OK**:



You will now be connected to the VPN in a few moments:



To verify that you are connected, the Cisco VPN icon will show a lock icon in the corner of your screen where the time is:

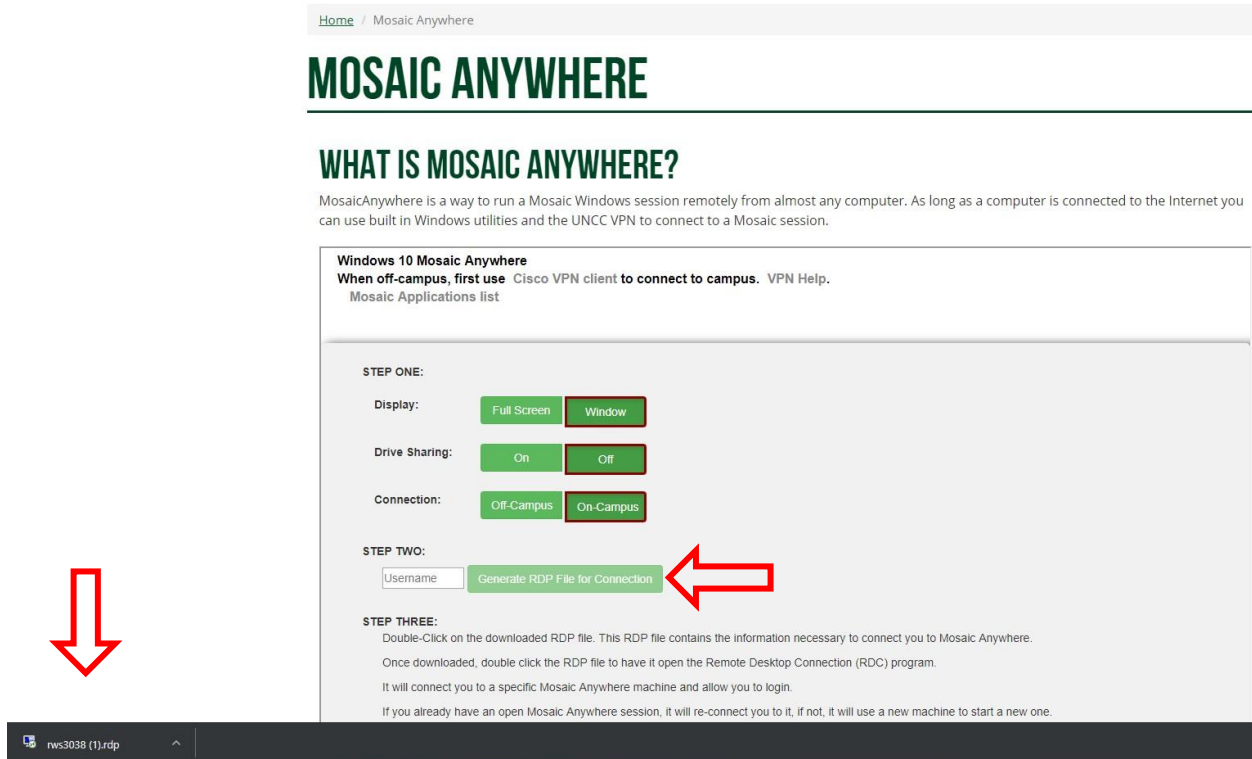


Now you may use Mosaic Anywhere.

Using Mosaic Anywhere:

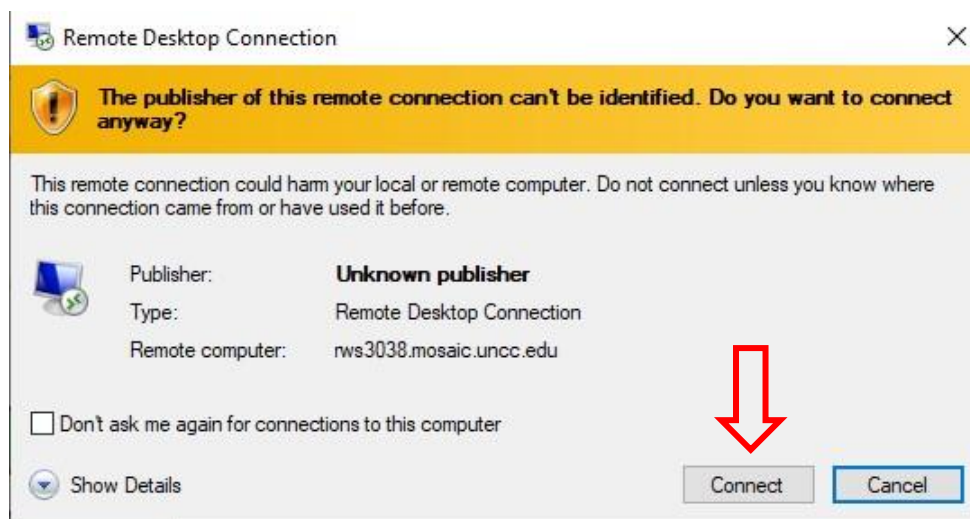
Now that you have connected to the VPN, you can connect to Mosaic Anywhere.

Go to <https://engrmosaic.uncc.edu/mosaic-anywhere/mosaic-anywhere> in your web browser. Click on your preferred settings and type in your username. Click the Generate RDP File for Connection button. A file will download called an RDP file, click on the RDP file to open it:



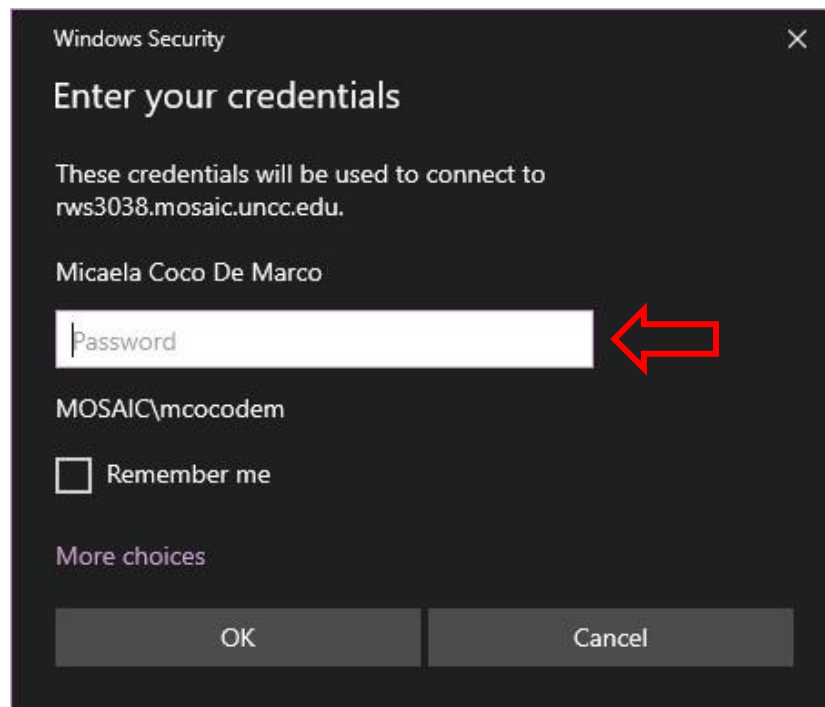
The screenshot shows the Mosaic Anywhere web interface. At the top, there is a navigation bar with "Home / Mosaic Anywhere". Below this is the main heading "MOSAIC ANYWHERE" and a sub-heading "WHAT IS MOSAIC ANYWHERE?". A brief description follows: "MosaicAnywhere is a way to run a Mosaic Windows session remotely from almost any computer. As long as a computer is connected to the Internet you can use built in Windows utilities and the UNCC VPN to connect to a Mosaic session." Below this is a section titled "Windows 10 Mosaic Anywhere" with instructions: "When off-campus, first use Cisco VPN client to connect to campus. VPN Help. Mosaic Applications list". The main content area is divided into three steps. "STEP ONE:" includes three rows of settings: "Display:" with "Full Screen" and "Window" buttons; "Drive Sharing:" with "On" and "Off" buttons; and "Connection:" with "Off-Campus" and "On-Campus" buttons. "STEP TWO:" includes a "Username" input field and a "Generate RDP File for Connection" button. "STEP THREE:" includes instructions: "Double-Click on the downloaded RDP file. This RDP file contains the information necessary to connect you to Mosaic Anywhere. Once downloaded, double click the RDP file to have it open the Remote Desktop Connection (RDC) program. It will connect you to a specific Mosaic Anywhere machine and allow you to login. If you already have an open Mosaic Anywhere session, it will re-connect you to it, if not, it will use a new machine to start a new one." A red arrow points down from the left side of the page towards the "Generate RDP File for Connection" button, and another red arrow points left towards the same button.

A window like this will open, click **Connect**:

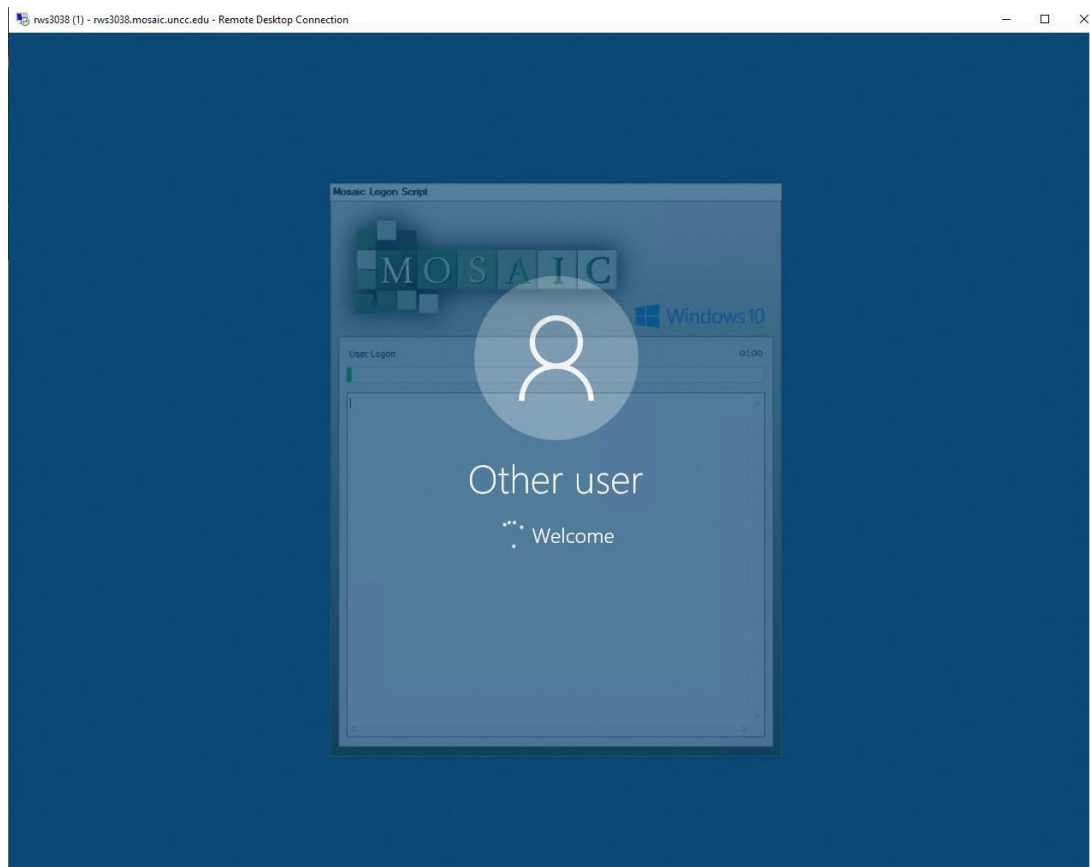


The screenshot shows the "Remote Desktop Connection" security warning dialog box. The title bar reads "Remote Desktop Connection". The main text is: "The publisher of this remote connection can't be identified. Do you want to connect anyway?". Below this is a warning: "This remote connection could harm your local or remote computer. Do not connect unless you know where this connection came from or have used it before." The dialog box displays the following information: "Publisher: Unknown publisher", "Type: Remote Desktop Connection", and "Remote computer: rws3038.mosaic.uncc.edu". There is a checkbox for "Don't ask me again for connections to this computer" which is currently unchecked. At the bottom left, there is a "Show Details" button. At the bottom right, there are "Connect" and "Cancel" buttons. A red arrow points down towards the "Connect" button.

Another window will open, type in your Mosaic password.



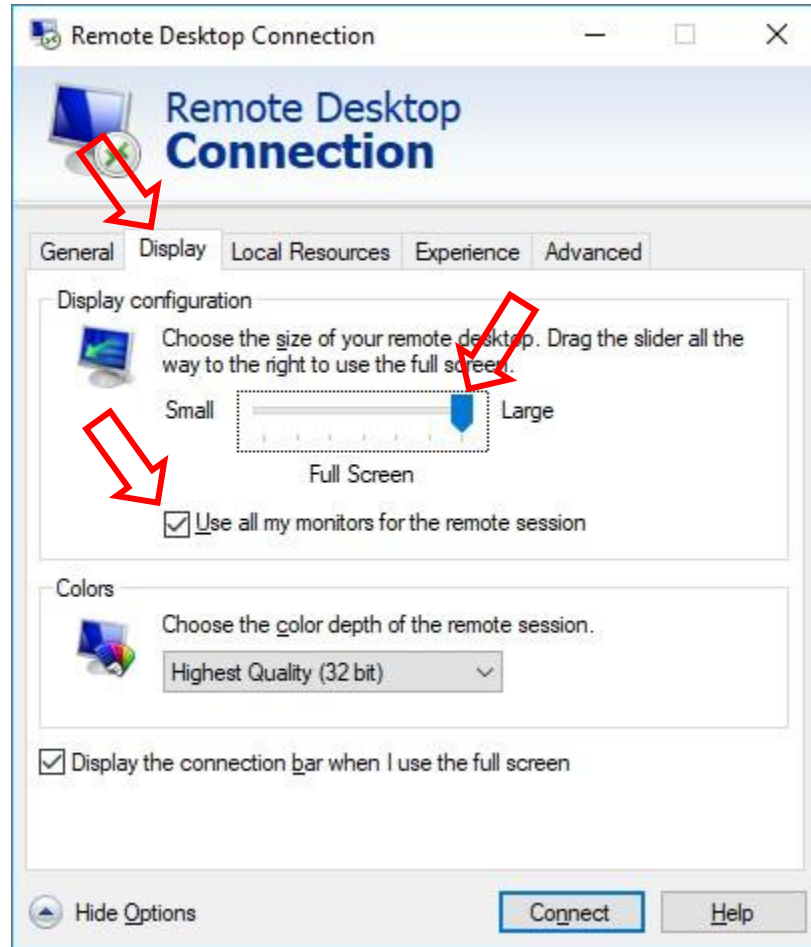
Wait for the session to connect and click ok to start the login script.



Using Multiple Screens

If you ever want to use more than one screen for Mosaic Anywhere, you can follow these instructions.

Click on the **Display Tab** connection box, and make sure that the slider bar is moved all the way to the right. Also the checkbox at the bottom is checked.

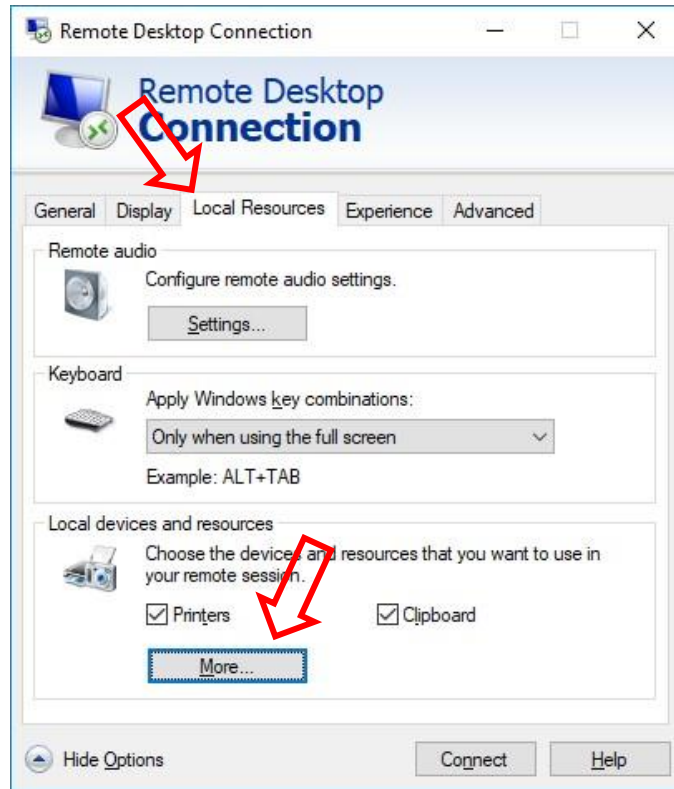


If you are done configuring the advanced options, please click connect.

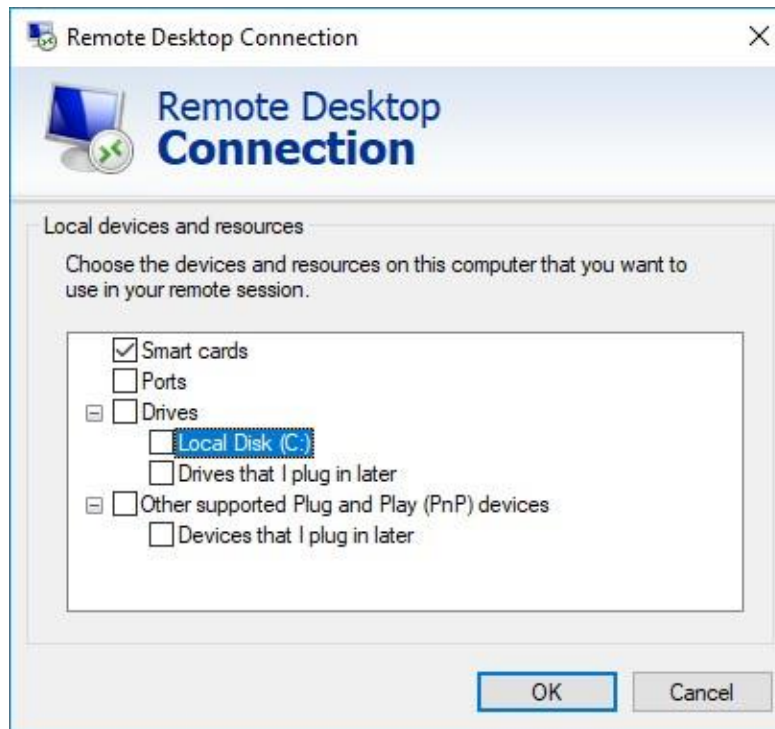
Connecting local drives and/or devices to Mosaic Anywhere

If you would like to connect a local hard drive or local device to Mosaic Anywhere, please follow these instructions.

In the **Local Resources** tab, click the **More** button.



From here you can select drives or devices that you want to connect to Mosaic Anywhere, then Click **OK**



Click **Connect** to connect.

Please note that this feature can be very dangerous and isn't recommended in an average workflow.

Disconnecting from the VPN

After you have used our Mosaic Anywhere system, it is recommended that you disconnect from the VPN. However, you must reconnect to the VPN the next time you want to use Mosaic Anywhere.

Near the System time, double click on the Cisco AnyConnect Icon.



A window like this will open, click **Disconnect**:



You will now be disconnected from the VPN. Remember to connect to the VPN the next time you want to use Mosaic Anywhere.

If you have any questions, please feel free to contact us.

By a ticket: <https://help.charlotte.edu>