

Accessing Mosaic Linux via FastX on OSX

Tested on: OSX 10.11.5

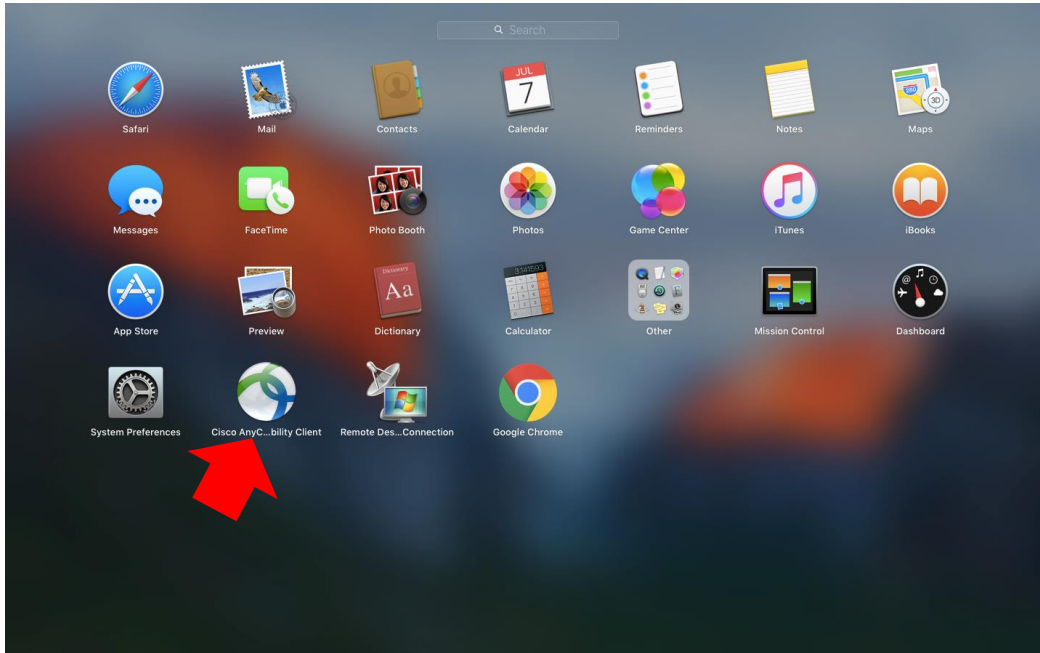
Applies to: OSX 10.7+

The current method for accessing Mosaic Linux via your personal computer is through a program called FastX. This program can be downloaded on the Mosaic website [here](#)¹.

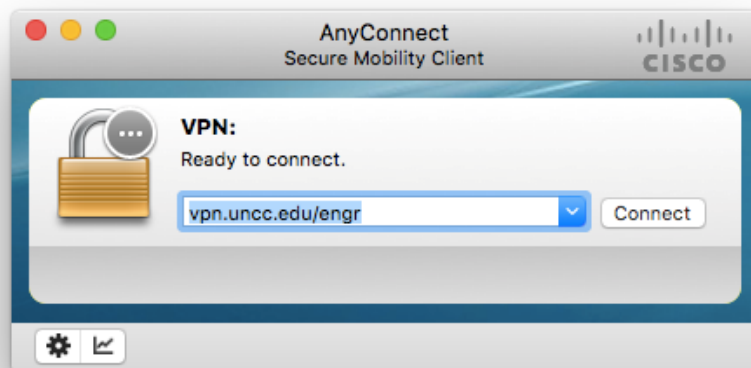
¹ <https://engrmosaic.uncc.edu/accessing-mosaic/graphical-mosaicanywhere-nx>

Installation and Setup

If you are off campus click [this](#)² link to navigate to the UNCC VPN website, if not skip the VPN instructions. Choose your operating system and it will download the installer. Run the installer and you will have Cisco AnyConnect installed.

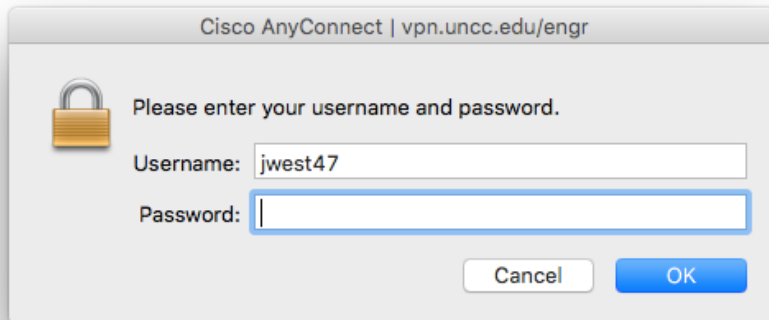


Open Cisco AnyConnect and type in the VPN address “vpn.uncc.edu/engr” and click “Connect”.

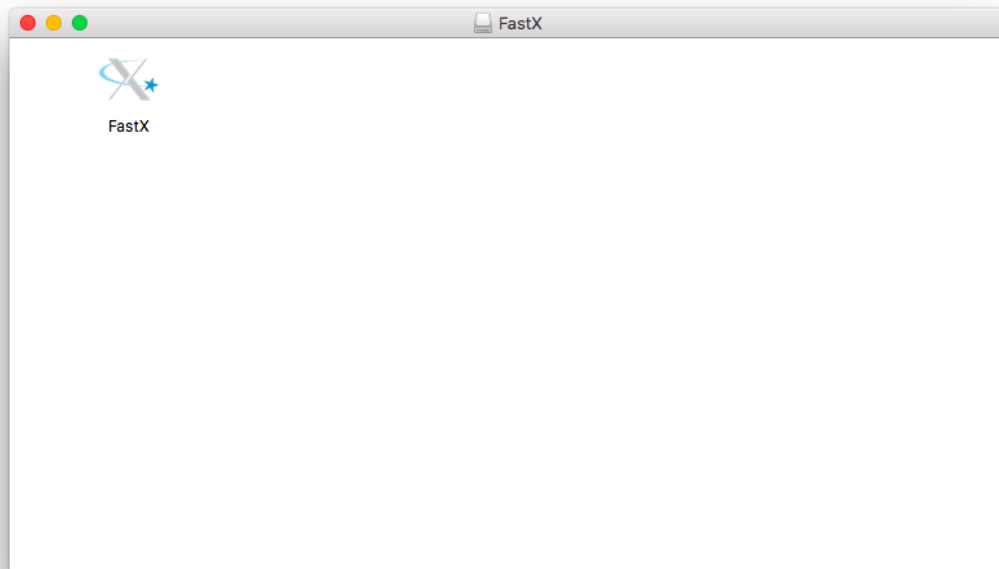


² <https://vpn.uncc.edu/+CSCO+/logon.html>

It will prompt you to log in. Input your NinerNet credentials and click "OK".

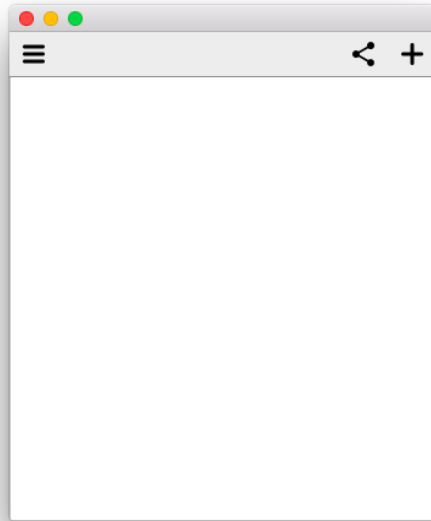


Download the .dmg for FastX from the Mosaic website [here](https://engrmosaic.uncc.edu/accessing-mosaic/graphical-mosaicanywhere-nx)³ and run it. You will see FastX in the folder. Copy this to your application folder.



³ <https://engrmosaic.uncc.edu/accessing-mosaic/graphical-mosaicanywhere-nx>

Once it has been copied to your application folder run the application. Click the “+” in the top right and click “SSH”.



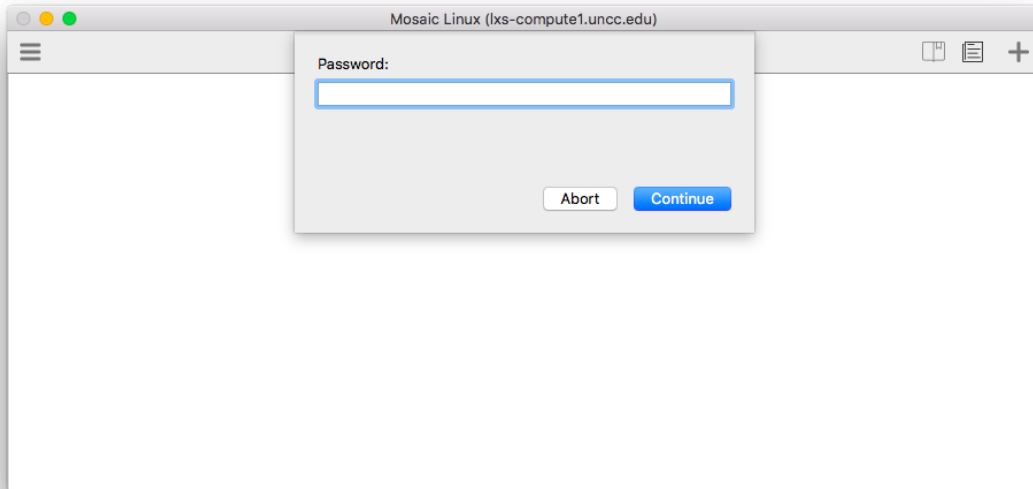
Fill out the information below with the server you wish to connect to (lxs-compute1, lxs-compute2, lxs-epic1, lxs-epic2) and your username. Click “save” when you have all the necessary fields filled out.

A screenshot of a macOS dialog box titled "New SSH Connection". The dialog has a light gray background and a title bar with three colored window control buttons (red, yellow, green). It contains five text input fields:

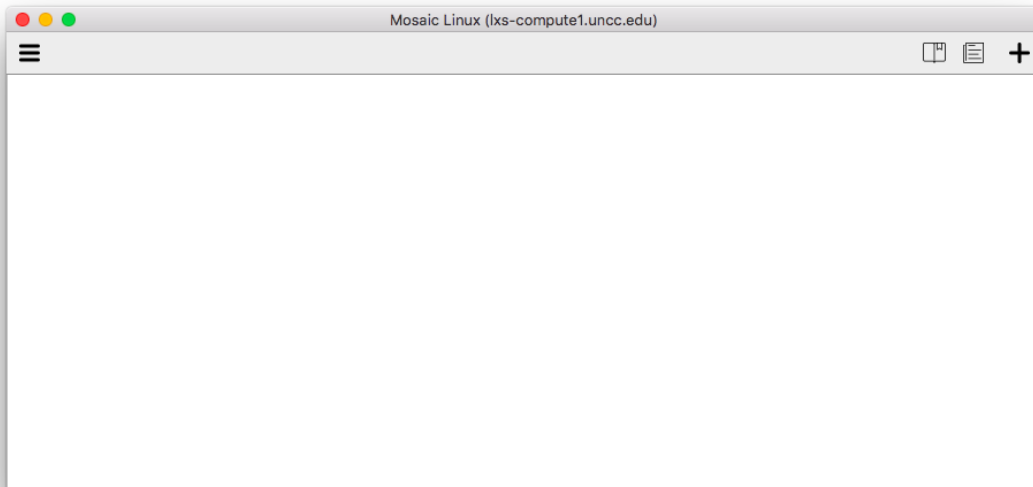
- Name***: Mosaic Linux
- Host***: lxs-compute1.uncc.edu
- Port***: 22
- User**: jwest47 (this field is highlighted with a blue border)
- Sci**: bin/sci

At the bottom of the dialog, there are three buttons: "Reset", "Cancel", and "Save". The "Save" button is highlighted in blue.

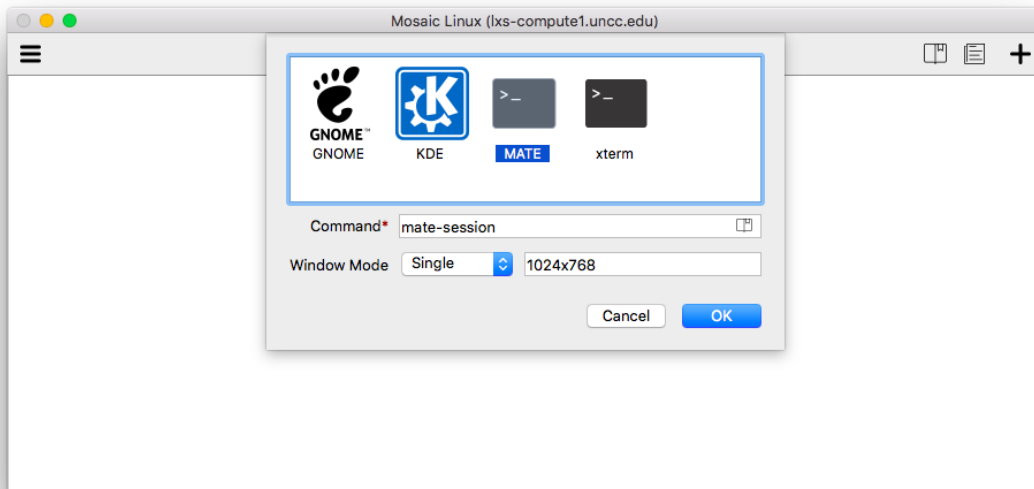
Enter your Mosaic Linux password and click "Continue".



Click the "+" in the top right corner.



Select "Mate" and input your monitor's resolution, then click "OK".



You should now be connected to Mosaic Linux.

